

© ClintonAlumiNEWS

VOLUME 2, ISSUE 1

JANUARY 2011

customer P R O F I L E



The cylindrical, upper part of this hyperbaric chamber made by Perry Baromedical (not including the transparent material, of course) consists almost entirely of parts machined and refined by Ace Precision that were supplied by Clinton Aluminum.

Photo from www.perrybaromedical.com

EASING PRESSURE

Ace Precision's role in making hyperbaric chambers gets enhancement from CA



Shown are some of the finished parts created by Ace Precision from Clinton Aluminum plate and bar stock. Photo from Ace Precision Industries

The pressures of time in dealing with a medical equipment client had been squeezing Ace Precision Industries.

Clinton Aluminum allowed Ace to decompress, and more than a little.

The Akron-based manufacturer supplies Perry Baromedical, a Florida company, with parts for the upper portion of hyperbaric chambers, which first came into the public



Tom Stugmyer

consciousness when pop star Michael Jackson was reported to have used one in the 1980s.

The door, hinges and larger parts of the devices had been supplied to Perry from Ace through castings, or molds made from melted metal.

"It's hard to turn a casting into a medical-grade part," says Tom Stugmyer, manufacturing manager for Ace. "We always

See ACE, Page 4

IT guys are there to help (always)/4

I N S I D E

Employees of the Month/3

JANUARY MILESTONES

BIRTHDAYS

Charles Simons	Jan. 1
Edwin Harper	Jan. 8
Jeremy Timm	Jan. 10
Anthony Negrelli	Jan. 16
Lawrence Fye	Jan. 18
Allen Long	Jan. 20
Eric Spencer	Jan. 22
Matthew Fye	Jan. 27
James Sutton Jr.	Jan. 27

SERVICE ANNIVERSARIES

Sherry Moss	17 years
Scott Beitel	11 years
Edward Burnham	7 years
Robert Tomasik	7 years
Lisa Barton	5 years
James Diehl	5 years
Jack Otto	5 years
Mark Kingston	4 years
James Sheppard	4 years
Nicholas Bennett	3 years
Eric Kimble	1 year
Michael Maag	1 year
Laura Paradis	1 year
William Shull	1 year



Ava Marie Wright, granddaughter of Lane Yerian, was born Dec. 6, weighing 9 pounds, 8 ounces.

CHECK IT OUT

Kind words: “Thank you for getting out our order last week. It was for holiday shutdown work and had to be done by Thursday. ... Pass the word to your shop my thanks. Everyone from your sales department to your drivers have been a pleasure to deal with. I know I am only a shop guy but if I have any say you will be our only supplier for aluminum and stainless.”

— Tom Bollenbacher,
Janotta & Herner Inc.,
in an e-mail to
Ashley Andrews

Say hello: Please give a warm welcome to our newest employee, **Scott McCleary Jr.** (shipping and packaging).

Let us know: 2010 was the first year for the ERT Committee. Please visit the following link to take a quick survey and provide any feedback you may have: <http://bit.ly/eD4MV5>

If you would like the newsletter and future surveys emailed to you, please provide Abby Yankovich with a personal e-mail address.



Clinton Aluminum & Stainless Steel

★ EMPLOYEES *of the* MONTH

If you put the words “inventory manager” with the words “end of the year,” it’s not much of a stretch to come up with four more: “Employee of the Month.”

The challenges of managing Clinton Aluminum’s ever-shifting and prodigious inventory are in Kathy Huffman’s face daily. They become something far more onerous when a calendar year’s days grow small.

“If I could find an easier way to do it, it would be great,” she says with a smile in her voice. “But it’s very important. It’s the first thing I do every day.”

Tons of material are shipped in, transferred from Ohio to Wisconsin or other sites or shipped out directly every day. Over the last several weeks, the annual physical inventory was completed.

“That’s what I live for every year,” she says, having been inventory manager for about 10 years. “The biggest thing is if the material is not in the right warehouse, we could lose an order.” Huffman is quick to thank the warehouse folks on whom she can count (haha) and appreciates the teamwork that’s behind every EOM honoree.

“One driver that I know of said I’m like their go-to girl when they need something done and they’re out on the road,” she says. “If it weren’t for everybody working together, it wouldn’t get done.”

Huffman is a 1974 graduate of Coventry High School and has two children — daughter Cassie, 31, and son Geoff, 29. She spent time with Geoff’s son, Conner, 5, at Christmas “and it was wonderful.”



Kathy Huffman

It’s clear from speaking to Dan Wingerter that he treasures time with his 4-year-old son, Leonardo. It’s also clear that a gentle current of good humor runs through his life.

When asked if his son was named after the actor DiCaprio or the artist da Vinci, he took an alternate path.

“She (his ex) wanted something Italian,” he says. “I went with my favorite Ninja Turtle.”

Wingerter has worked in the plate department at Clinton Aluminum for seven years, and for the last three has driven a truck when called upon. He got notice that he’d won Employee of the Month from Bob Smer as he was heading out the door Dec. 23 for the long Christmas weekend.

The 2002 Massillon Washington High graduate, like a lot of EOM winners, credits those around him.

“They’re all great,” he says. “We’re all close friends and we communicate well. We ain’t afraid to say something to each other, like ‘hey, I need help’ or ‘get your tow motor out of the way.’”

“I’m a hard worker. We do a lot of orders down here, and my boss seems to like me.”

Spare time often means all-day rides at Crow Canyon in Uhrichsville on his ATV, a 2003 Honda 400EX, with family and friends.

Wingerter’s parents live two blocks away from him in Massillon. His older brother, Doc, works at Timken Research. The youngest, Wylie, is studying pharmacy at the University of Toledo.



Dan Wingerter

HONORABLE MENTION

Jack Otto, Kevin Gisewhite, Troy Harp and Eric Spencer

They received an Employee Recognition parking space of their choice for the month of December.

@ Employee Profile

Name: Anthony Negrelli

Occupation: president

With CA since: October 2007

Lives in: Bainbridge

High School: Mayfield, '79

College: John Carroll, '83

Fun facts: Worked from 1983 to 2007

for Copper and Brass Sales, a division of Germany-based materials conglomerate ThyssenKrupp. ... worked for aluminum giant Alcoa for

eight months before coming to Clinton Aluminum. ... Has three daughters, two of whom, Jessica, 24, and Stephanie, 22, work for the Cleveland Clinic. ... Danielle, 20, is a sophomore international business major at the University of Dayton. ... Jessica is getting married in June to Elliott Clark, a medic Ranger in the U.S.



Army. ... Married 25 years to Suzanne, who’s a nurse. ... the vast majority of his career has been spent in sales, and his current position is also strongly focused there.

Quote: About meeting Suzanne: “Her friend hooked us up to go on a homecoming date. I had a choice between a friend and her, and I took her.”

TECH GURUS NEVER REST

Or, it may just seem that way to those who call on the IT guys, who program, troubleshoot and maintain day in and day out

You'd think being an information technology guy would be right up there with referee or telemarketer in the self-esteem sweepstakes. When things go right, you're not getting a whole lot of love. When things go wrong, you're getting none.

But Clinton Aluminum IT manager **Tim Morris**, a programming veteran for 30 years, and assistant **Ray Ficere**, on the job at CA since August, have their attitude and the systems they handle well in hand.

Really.

"If they're not screaming or yelling and jumping up and down, then I'm doing my job right," says Morris, a native of Springfield, Mo., who's led the charge with intermittent help over the last 12 years.

With the help of Ficere (pronounced Fis-AIR-ee), Morris has been able to concentrate on programming with jBASE,

the catch-all database system powering most of CA's end-user functions, from accounting to sales to operations to inventory and beyond.

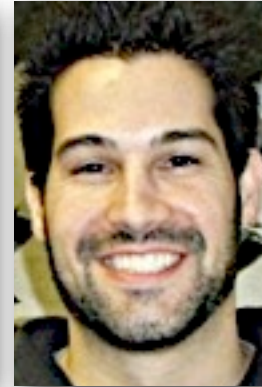
Ficere's task has been to maintain the network and non-jBASE issues, like the Microsoft Office suite and the Internet.

Morris works 8 to 5, but only on paper. In truth, he works more like 60 or 70 hours a week, what with both he and Ficere being on call for when a crisis inevitably arises. Ficere works 12-8, but again, only officially.

"I like flying by the seat of my pants; you kind of have to do that here," says Ficere, a Cuyahoga Falls native and resident who has a bachelor's degree in business administration and is working on a degree in management information systems. "I was one of those kids that



Tim Morris



Ray Ficere

always used to rip everything apart and then put it back together to see if it still works."

That background likely comes to the fore daily when dealing with the usual system and hardware hiccups amid the 65 workstations

or so populating Clinton.

"They (employees) usually don't mess things up themselves," Morris says. "But things happen and they may not understand what's going on."

"The less that I have to change things, the better I am at doing my job. The things that I do are only meant to enhance what they do. As long as what I do makes their job easier."

"If you're in this field, you pretty much know that if you're not on the job, you're on call," Ficere says. "If you don't know that, you might want to look at another field."

ACE from cover

had a problem with the castings," adding that finishing and painting the parts were held up due to coolant and oil issues with the parts' physical porosity. That would push delivery of the parts to Perry to six or eight weeks.

With Clinton's stock of bar and plate, there are some trade-offs within the process when it comes to cost, but the speed of delivery sends the overall expense down. Where castings meant weeks of production time, Clinton's ability to deliver the much-less troublesome stock in a few days is a godsend.

"Three-day delivery is almost unheard of," says Stugmyer, who's been with Ace since 1988. "The biggest argument was getting Perry to switch from castings to the plate."

The parts are machined at Ace to Perry's specifications, then shipped to a painter that puts on an automotive-type finish. They're then shipped to Perry in Riviera Beach, Fla., on the

Fast Facts	
Company	Ace Precision Industries
Founded	1950
Location	925 Moe Drive, Akron
Number of employees	20-25

Atlantic coast near West Palm Beach.

"We've been making these for a long time, plate-wise two or three years," Stugmyer says. In 2010, CA shipped 60 tons of material to Ace. **Sherry Moss** and **Mark Awad** are the point people for Clinton. "Mark gets all the credit and Sherry does all the work," Stugmyer jokes.

Hyperbaric chambers are used for hyperbaric oxygen therapy, which combines a pure oxygen environment with elevated atmospheric pressures to treat a growing list of medical issues. Its main use had been to treat divers suffering from decompression sickness.

"It (the chamber) looks like a big gerbil tube," says Stugmyer, who is originally from Middletown but stayed in the area after graduating from Mount Union College. He's been married for 30 years and has two children.

Ace Precision Industries makes an array of components for mass transit, medicine, compressors and other industrial uses.